

---

## Introduction

---

### Introduction for December 2010 WEE Survey

The online Western Economic Expectations (WEE) survey solicits views on the future economic performance of the western provinces and the country from a pool of about 1,800 economists and financial analysts who are closest to the working details of the Western Canadian economy.

The survey covers people who use economics in their work, in universities and colleges, industry associations, economic development agencies, the private sector and the public service across Western Canada.

The survey is conducted through a partnership between Alberta's two premier economic and policy research centres, the Canada West Foundation in Calgary and the Western Centre for Economic Research at the University of Alberta's School of Business in Edmonton. It is the only survey that solicits economic views from people in all four western provinces.

This is the third survey in the WEE series, previous surveys being administered electronically in the fall of 2009 and the winter of 2010.

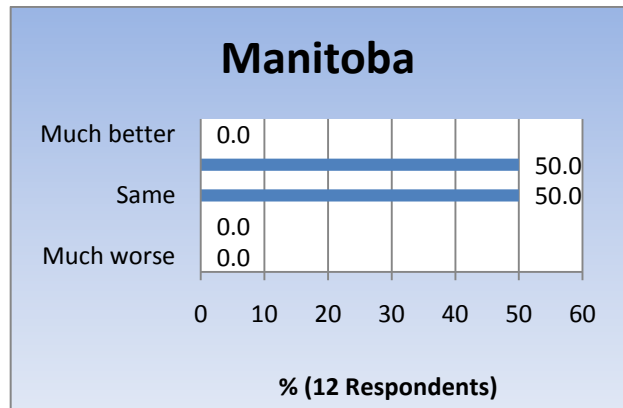
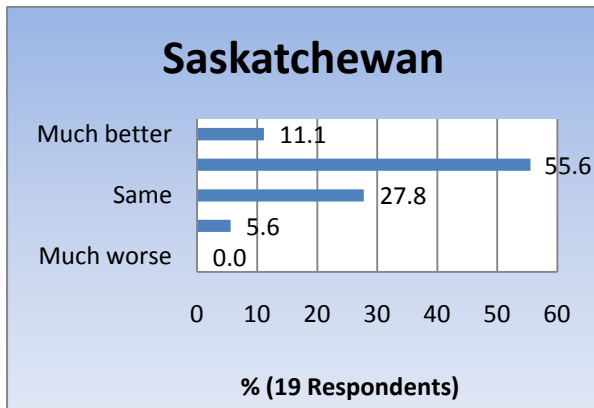
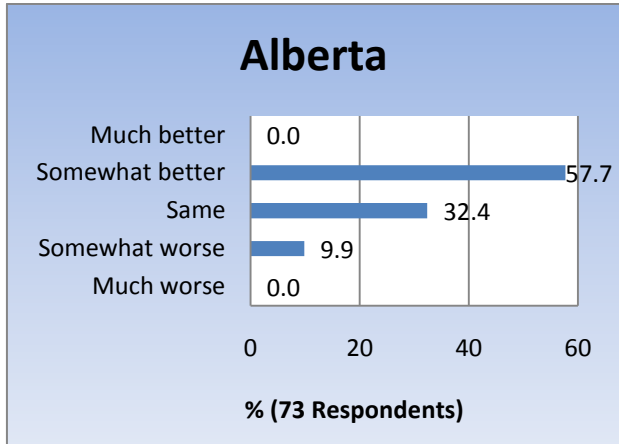
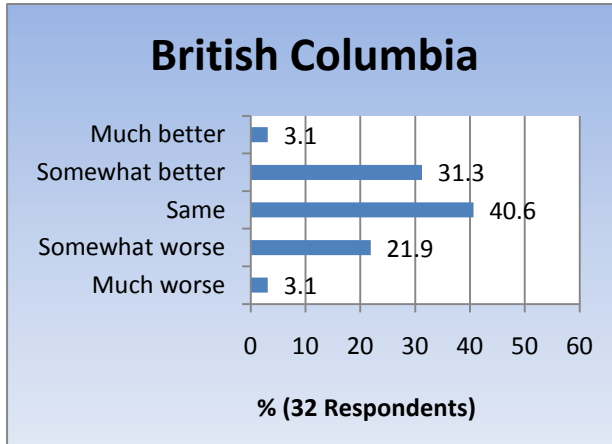
---

## Results

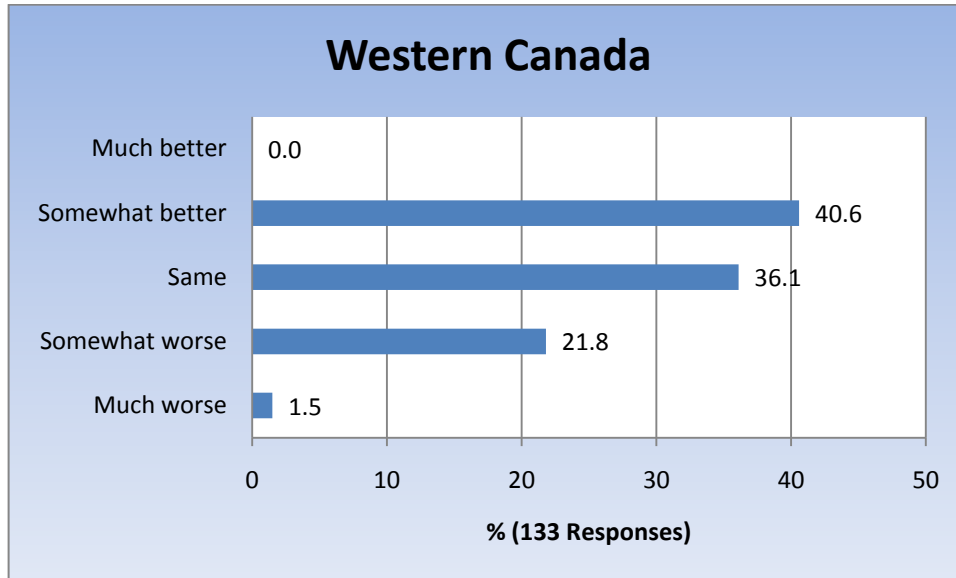
---

In this installment, from a survey undertaken from October 14th to November 23<sup>th</sup>, 2010, 137 out of over 1,800 potential respondents completed the survey, providing the lowest response rate to date of about 7.5%. Provincially, 32 (23.4%) responses are from British Columbia, 73 (53.3%) are from Alberta, 19 (13.9%) are from Saskatchewan, and 13 (9.5%) are from Manitoba. The bulk of respondents, over 80%, reside in Western Canadian cities.

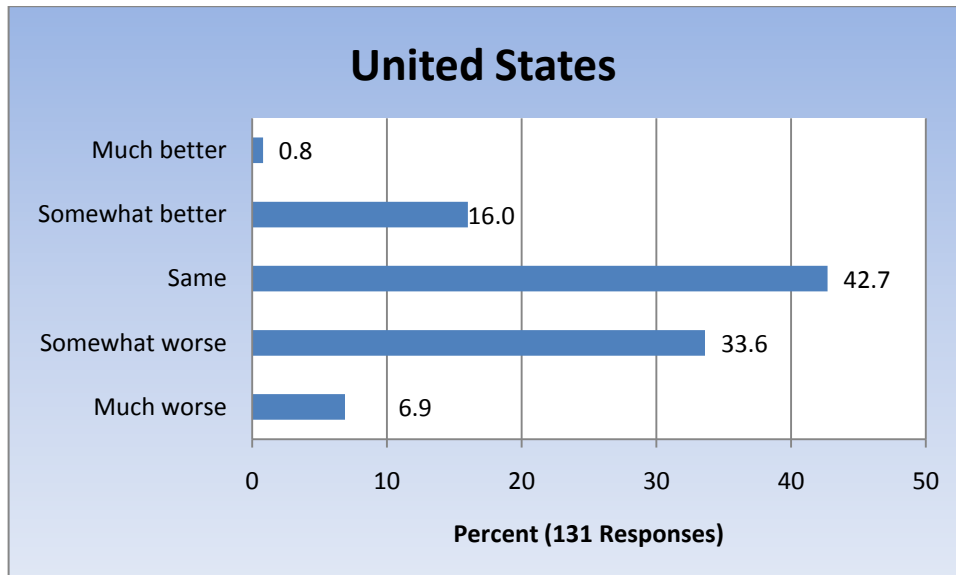
Q: How do you expect your province's economy to perform over the next 6 months?



Q. How do you expect Canada's economy to perform over the next 6 months?

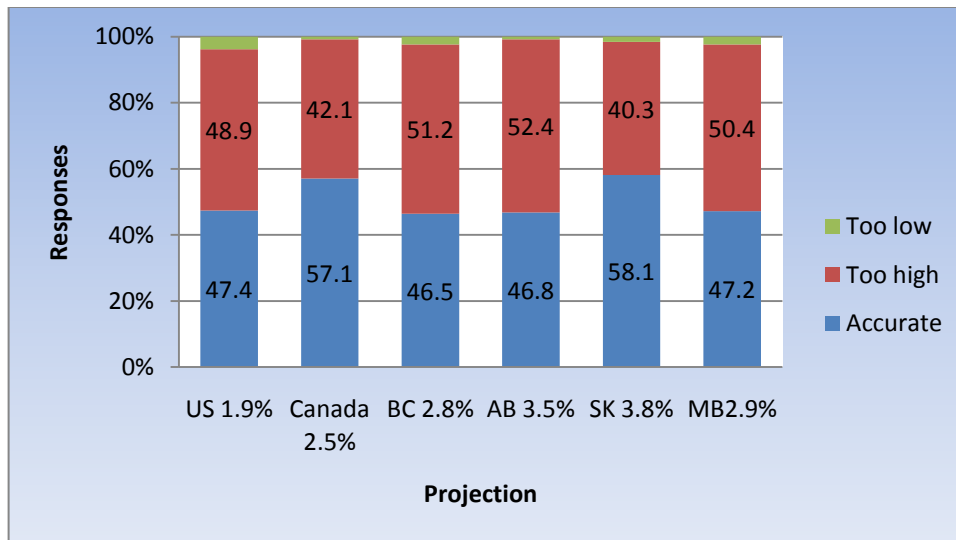


Q. How do you expect the US economy to perform over the next 6 months?



Q: The following projections for real economic growth in 2011 are based on a weighted average of the major Canadian bank forecasts released since August. For each of the following, do you think the forecast is:

	Projection	Reasonably accurate	Too high	Too low	Responses
United States	1.9%	47.4	48.9	3.8	133
Canada	2.5%	57.1	42.1	0.8	133
British Columbia	2.8%	46.5	51.2	2.4	127
Alberta	3.5%	46.8	52.4	0.8	126
Saskatchewan	3.8%	58.1	40.3	1.6	124
Manitoba	2.9%	47.2	50.4	2.4	123



Western Centre for Economic Research

